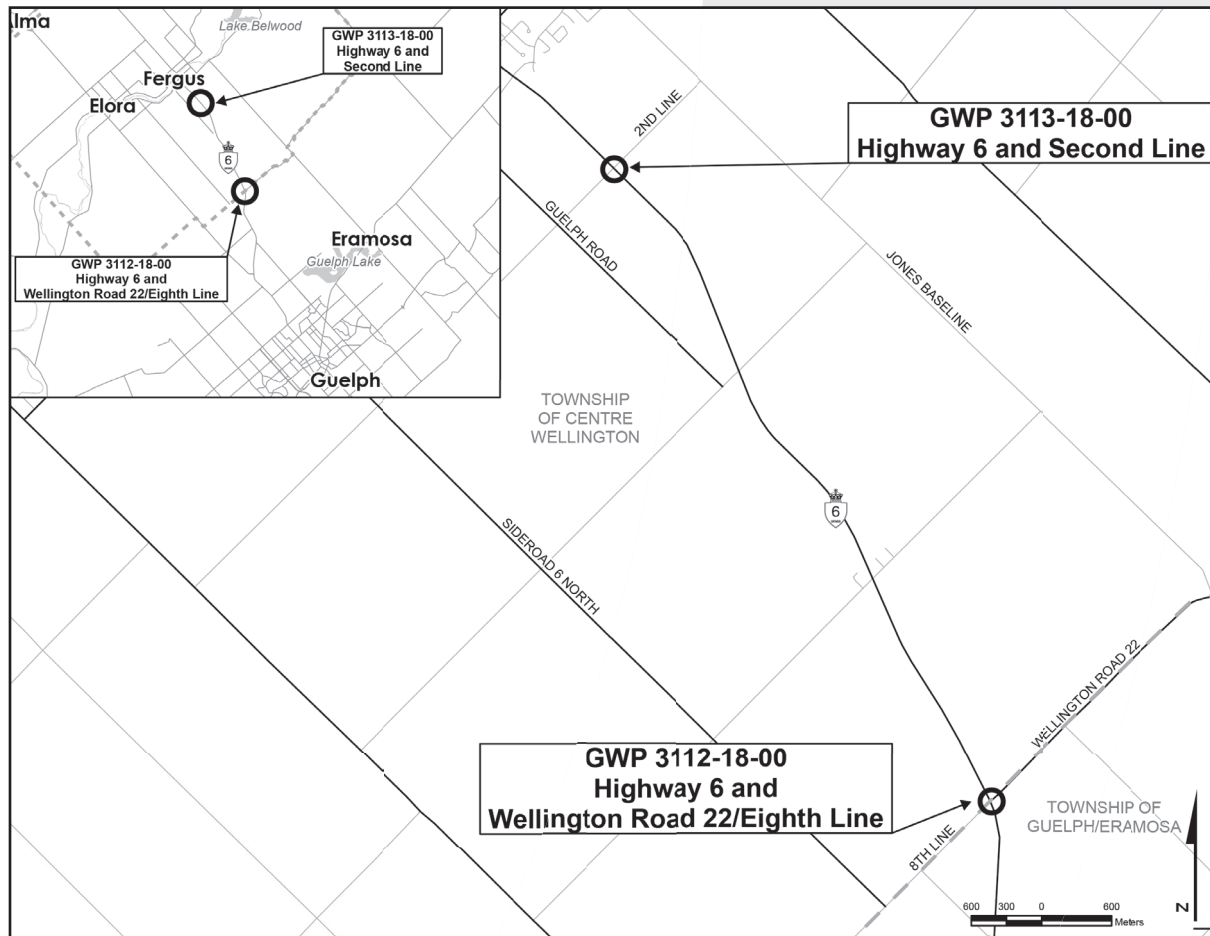


# Notice of Study Commencement

## Preliminary Design and Class Environmental Assessment Study Intersection Improvements at Highway 6 and Eighth Line/Wellington Road 22, and Highway 6 and Second Line (GWP 3113-18-00 and 3112-18-00)



### THE PROJECT

The Ontario Ministry of Transportation (MTO) has retained McIntosh Perry Consulting Engineers Ltd. (McIntosh Perry) to undertake the Preliminary Design and Class Environmental Assessment (Class EA) Study for intersection improvements on Highway 6 within the Township of Guelph/Eramosa and Township of Centre Wellington, County of Wellington.

### THE PROCESS

The Preliminary Design is following the approved planning process for a Group 'B' project in accordance with the Class EA for Provincial Transportation Facilities (2000).

The Preliminary Design will include the generation of alternatives and evaluation, based on technical and environmental factors. Consultation will take place throughout the study. One virtual Public Information Centre (PIC) will provide an opportunity for stakeholders to comment. Throughout the study information will be updated on the Project Website [www.highway6wellingtonroadsecondline.com](http://www.highway6wellingtonroadsecondline.com).

Upon completion of the Preliminary Design, a Transportation Environmental Study Report (TESR) will be prepared. The TESR will document the existing conditions of the study area, the evaluation of the alternatives, and identify the preferred plan and commitments to future work. The TESR will be made available for a 30-day comment period at the completion of the Preliminary Design.

### COMMENTS

We encourage you to visit the Project Website at any time during the study for updates on this project. If you require further information or have accessibility requirements in order to participate, please contact one of the individuals named below. Any comments or questions can be directed to one of the following project team members and are respectfully requested by **December 23, 2023**:

#### Mr. Steven Pilgrim, P.Eng.

Project Manager  
McIntosh Perry Consulting Engineers Ltd.  
1-1329 Gardiners Road  
Kingston, ON K7P 0L8  
tel: 343-344-2629 or  
toll-free: 1-888-348-8991  
e-mail: [highway6@mcintoshperry.com](mailto:highway6@mcintoshperry.com)

#### Ms. Wendy Xu, P.Eng.

Project Engineer  
Ontario Ministry of Transportation  
3rd Flr, 659 Exeter Road,  
London, ON N6E 1L3  
tel: 548-588-1937  
e-mail: [wendy.xu@ontario.ca](mailto:wendy.xu@ontario.ca)

Information collected will be used in accordance with the *Freedom of Information and Protection of Privacy Act*. With the exception of personal information, all comments become part of the public record.

Notice issued on: November 22, 2023