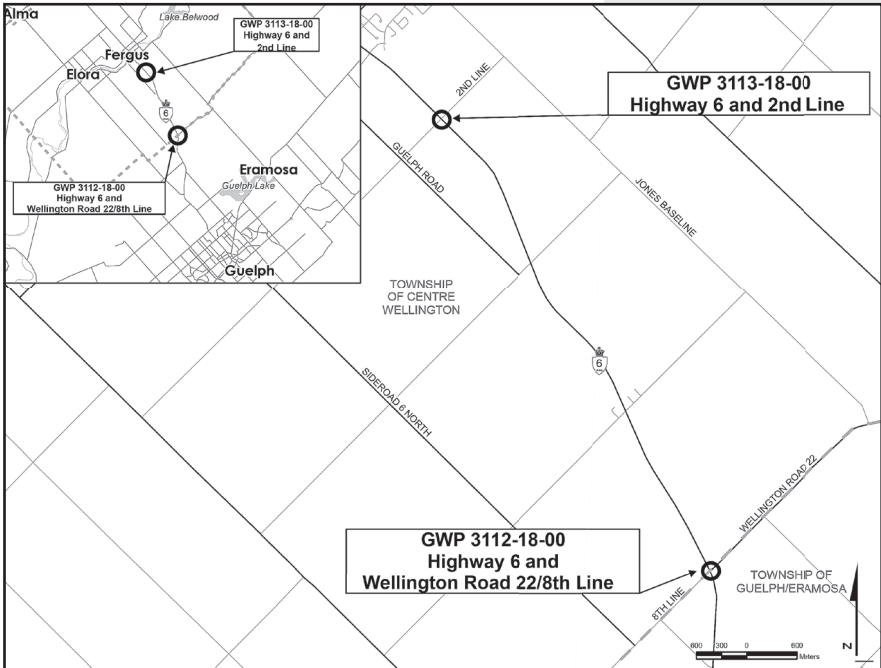


# Notice of Proposed Transition

## Preliminary Design, Detail Design, and Class Environmental Assessment Study Intersection Improvements at Highway 6 and Eighth Line/Wellington Road 22, and Highway 6 and Second Line, Wellington County (GWP 3112-18-00 and 3113-18-00)

### THE PROJECT

The Ontario Ministry of Transportation (MTO) has retained Egis (formerly McIntosh Perry) to undertake the Group 'B' Preliminary Design, Detail Design, and Class Environmental Assessment (Class EA) Study for the Highway 6 intersection improvements within the Township of Guelph/Eramosa and Township of Centre Wellington, Wellington County.



### THE PROCESS

The Study is currently being completed as a Group 'B' project in accordance with the *Class EA for Provincial Transportation Facilities (2000)*.

### PROPOSED TRANSITION

This notice is being issued to inform interested stakeholders, members of the public, and Indigenous communities of the intent to transition this project to the *Class Environmental Assessment for Provincial Transportation Facilities and Municipal Expressways (2024)*. Transitioning to the new Class EA process will improve the planning process of projects beyond the preliminary design stage, bringing MTO into alignment with best practices observed in other Class EA frameworks. Transitioning from the requirements of the 2000 Class EA to the 2024 Class EA reflects a commitment to optimizing the assessment process by removing redundancies and expediting project planning to facilitate a more streamlined implementation process. Commitments made during the preliminary design phase will be addressed as the project progresses through the design process. Design and construction information will continue to be published on the project website and opportunities for public consultation will be ongoing through preliminary design.

Information on the project, including the process under the 2024 Class EA can be found at [www.highway6andwellingtonroadsecondline.com](http://www.highway6andwellingtonroadsecondline.com).

### COMMENTS

If you have any comments or questions about this notice, or have questions about the study, we respectfully request you to contact one of the following Project Team members by **September 9, 2024**:

**Mr. Steven Pilgrim, P.Eng.**

Project Manager

Egis

1-1329 Gardiners Road

Kingston, ON K7P 0L8

tel: 343-344-2629 or

toll-free: 1-888-348-8991

e-mail: [highway6@mcintoshperry.com](mailto:highway6@mcintoshperry.com)

**Ms. Wendy Xu, P.Eng.**

Project Engineer

Ministry of Transportation, West  
Region

3<sup>rd</sup> Flr, 659 Exeter Road,

London, ON N6E 1L3

tel: 548-588-1937

e-mail: [wendy.xu@ontario.ca](mailto:wendy.xu@ontario.ca)

You are encouraged to visit the project website where project information including notice, background information, etc. can be found. You can also submit comments or questions to the project team on the project website.

Information collected will be used in accordance with the *Freedom of Information and Protection of Privacy Act*. With the exception of personal information, all comments become part of the public record.